

Robb Report

# Vacation Homes

SUMMER 2009

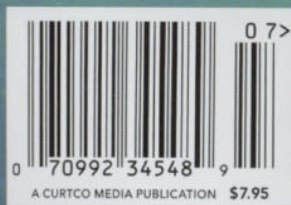
EXCEPTIONAL WATERFRONT, GOLF, COUNTRY, MOUNTAIN, AND VINEYARD PROPERTIES

## FIND THE PERFECT ESCAPE

FROM \$100,000 PRIVATE ISLANDS TO \$100 MILLION  
DREAM HOMES—AND EVERYTHING IN BETWEEN



**ULTIMATE BEACH HOUSES**  
MARTHA'S VINEYARD, BRAZIL,  
ANGUILLA, AND BEYOND



A CURTCO MEDIA PUBLICATION \$7.95

[www.vacationhomesmag.com](http://www.vacationhomesmag.com)

### PLUS

THE GREATEST OUTDOOR UMBRELLA  
CONCIERGE SERVICES: BRINGING THE HOTEL HOME  
BEST OF ITALY: FURNISHINGS, VILLA RENTALS, AND MORE



whole-ownership residences called the Terraces.

"I wanted to create an option for owning a second home in Coeur d'Alene that felt just as comfortable as a primary home," says the resort's owner, Duane Hagadone. "I wanted the square footage to emulate what our buyers are accustomed to at their main homes."

The residences range from roughly 6,300 square feet to 8,300 square feet, and each includes a 120-foot-long glass wall that affords expansive views of the 25-mile-long lake. The window walls also give homeowners the opportunity to watch golfers struggle to reach the resort's signature "floating" green at the 14th hole of the Scott Miller-designed Coeur d'Alene Resort Golf Course, which is located adjacent to the Terraces.

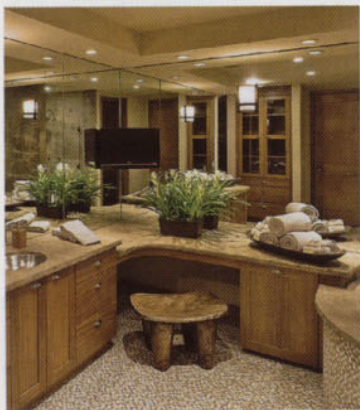
Completed in March 2008, the Terraces marks the resort's first and final ownership opportunity. Each unit comes with two lifetime memberships to the golf club, a 36-foot covered boat slip, and a family membership to the beach club. Owners also have access to the new 30,000-square-foot spa, which boasts a \$100,000 SilverTAG shower with more than 18 showerheads and up to 30 different preset shower programs.

Currently only eight residences remain for sale. Prices range from \$3.5 million to \$4.6 million for unfinished, completely customizable residences, and \$5.4 million to \$5.9 million for turnkey residences with custom furnishings by Palm Desert, California-based architect and interior designer Guy Dreier. [Taylor Hill]

The Terraces, 208.661.3734, [www.theterracescda.com](http://www.theterracescda.com)

## THE TERRACES

**ESTABLISHED IN 1986**, the Coeur d'Alene Golf and Spa Resort has earned a reputation as a large-scale resort with small-town charm. The 135-acre property, located on the northern shore of Idaho's Lake Coeur d'Alene, features waterfront and water-view rooms and suites, a renowned golf course, and eight dining options, including a restaurant sited on its own island within the lake. And now, for the first time, the resort is offering 30



### Location

Coeur d'Alene, Idaho

**TOP:** The Terraces marks the only opportunity for ownership at the Coeur d'Alene Golf and Spa Resort. **ABOVE AND RIGHT:** Buyers of the 30 residences have the option of choosing units furnished by designer Guy Dreier.





### 1. JALOUSIE ENCLAVE

Two volcanic spires flank St. Lucia's Jalousie Enclave, leaving only a sandy beach and two mountains in view. The community features 21 villas priced from \$2 million and 51 estate sites priced from \$3.5 million to \$8 million; each property will come with a membership to one of the seven new golf clubs located throughout the island.

440.247.4003, [www.jalousie-enclave.lc](http://www.jalousie-enclave.lc)

### 2. ISTANA PHUKET

Opulent living and unobstructed sea views are the hallmarks of Istana Phuket. Located at Nai Thon Beach, overlooking the Andaman Sea, the nearly 28-acre project offers 19 villas, ranging from 5,000 square feet to 10,000 square feet and priced from \$3.2 million to \$6.3 million. The contemporary, tropical-style homes are designed by Bali-based Gfab Architects and include water features, open-air pavilions, stone finishes, and traditional Siamese timber treatments. Each home also has a theater, a wine cellar, a gym, and a Lutron home-automation system.

+66.870.34.2090, [www.istanaphuket.com](http://www.istanaphuket.com)

### 3. YACHTPLUS

YachtPlus aims to take the hassle out of owning a yacht with the introduction of its 40 Signature Series yachts. Four 135-foot yachts will be strategically placed in different locations around the world so that owners will be able to enjoy the ships year-round. Upon purchasing a one-eighth share, priced at \$2.82 million, owners are guaranteed 34 days, much of which can be enjoyed in the Mediterranean or Caribbean, aboard any of the 5,700-square-foot, Lord Foster-designed yachts. The first yacht of the series has been completed, with the remaining three to be launched by summer 2010. Annual dues are \$290,000 and cover maintenance,

transoceanic crossings, and operations.

+44.0.207.824.9945, [www.yachtplus.co.uk](http://www.yachtplus.co.uk)

### 4. RAINMAKERS

The Robert Trent Jones Jr.-designed golf course is the focal point of this high-desert community, where 135 acres of open space surround the course for uninterrupted views of the mountains. More than 450 homes and homesites are planned for the community's 1,021 acres in northern New Mexico; homes are priced from \$350,000 to \$1 million, and homesites are priced from \$94,000 to \$325,000.

866.700.8439, [www.rainmakersusa.com](http://www.rainmakersusa.com)

### 5. PINE CREEK SPORTING CLUB

This sporting community is geared toward the avid outdoorsman. Located in Okeechobee, Florida, the 2,400-acre Pine Creek Sporting Club features hundreds of acres of quail fields and will include a members' lodge and horse stables. Sport-shooting facilities (five-stand, sporting clays, and tower shoots) will round out the amenities. Twenty-two ranch sites are priced from \$800,000 to \$1.2 million. The community also offers 23 cabins, starting at \$545,000, with interior design by Marc-Michaels.

561.514.9920, [www.pinecreeksportingclub.com](http://www.pinecreeksportingclub.com)

### 6. PUNTA BRAVA

At the tip of a seven-mile-long peninsula just south of Ensenada, Mexico, lies Punta Brava, the home of Tiger Woods' first oceanfront golf course. The course, planned for completion in 2011, promises to be as dramatic as Woods' career, with 17 greens or tees along the ocean, requiring that eight shots be played over the Pacific. The 260-acre community will comprise 40 estate sites and more than 100 villa residences.

866.619.8090, [www.puntabrava.com](http://www.puntabrava.com)

[Dawn DelVecchio and Taylor Hill]